

Notes:  
 Route line represents measurement along the Shortest Possible Route  
 Descriptions are in relation to the Runner's direction of travel  
 Course must be ran within the shown course restrictions  
 Measurement assumes no parked cars on course  
 This Official Course Map may not be altered  
 Measurement assumes a single runner  
 Mile locations are not certified  
 Map is not to scale

# SUSQUEHANNA RIVER

## RUNNING FESTIVAL

### HALF-MARATHON

21.0975km = 13.10937mi  
 Havre de Grace, Maryland  
 39° 32' 21.67", -76° 05' 29.51"  
 (WGS84)

Certified Course  
**MD19012NP**



Effective Dates:  
**7.11.19 - 12.31.29**

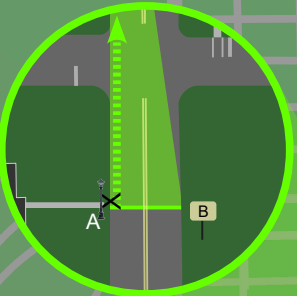
Course measured by:  
**JATHA PORCH**  
 Measured on:  
 June 12<sup>th</sup>, 2019



Split: 39° 32' 54.88", -76° 03' 20.94"



**Start:**  
 39° 32' 54.88", -76° 03' 20.94"  
 On S. Union heading North  
 At house #900  
 A) 3'8" N of light pole # 7278  
 B) 44'1" W of "Adopt A Highway" sign post



**Mile 1:** 39° 33' 9.91", -76° 05' 36.10"  
 On Otsego St. heading West  
 12' after pole #70633

**Mile 2:** 39° 33' 34.20", -76° 05' 32.36"  
 On Hatem Bridge heading NE  
 60' before the 14'3" yellow caution sign

**Mile 3:** 39° 34' 0.65", -76° 04' 34.26"  
 On Hatem Bridge (Eastbound side) heading NE

**Mile 4:** 39° 33' 35.7", -76° 04' 18.7"  
 On Broad St. heading SW even with E edge of house #625

**Mile 5:** 39° 33' 12.19", -76° 04' 15.91"  
 On Ave "D" heading SE  
 Even with "Bus Stop/No Parking" Sign at corner of Ave D & 4<sup>th</sup> St.

**Mile 6:** 39° 32' 54.88", -76° 03' 20.94"  
 On Ave "P" heading East, even with storm grate

**Mile 7:** 39° 32' 47.86", -76° 03' 40.49"  
 On Ave "A" Trail heading West, Behind tennis courts

**Mile 8:** 39° 33' 17.6", -76° 04' 32.0"  
 On Ave "A" heading NNW 13' after red hydrant

**Mile 9:** 39° 33' 52.72", -76° 04' 15.42"  
 On Aiken Ave. heading N 45' before mailbox #12

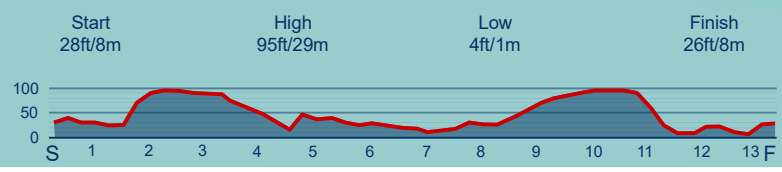
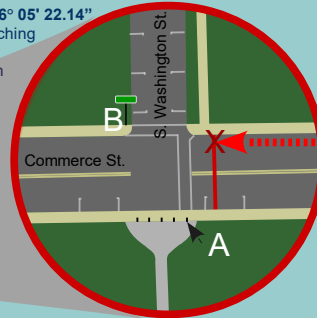
**Mile 10:** 39° 33' 51.55", -76° 04' 53.96"  
 On Hatem Bridge (Eastbound side) heading SW  
 30' after overhead "EZ Pass Toll" sign

**Mile 11:** 39° 33' 24.69", -76° 05' 52.69"  
 On Hatem Bridge (Eastbound side) heading SW 50' before black chain-link fence

**Mile 12:** 39° 33' 00.96", -76° 05' 24.96"  
 On St. John St. heading SE Even with N edge of building 317

**Mile 13:** 39° 32' 22.33", -76° 05' 16.44"  
 On Market St. heading South 21' after Giles St

**Finish:** 39° 32' 20.34", -76° 05' 22.14"  
 On Commerce St. approaching from the East  
 A) 47'2" NE of the eastern most black bollard  
 B) 44'2" East of the Commerce St./ Washington Ave. street sign post.



Scan for Map & certificate